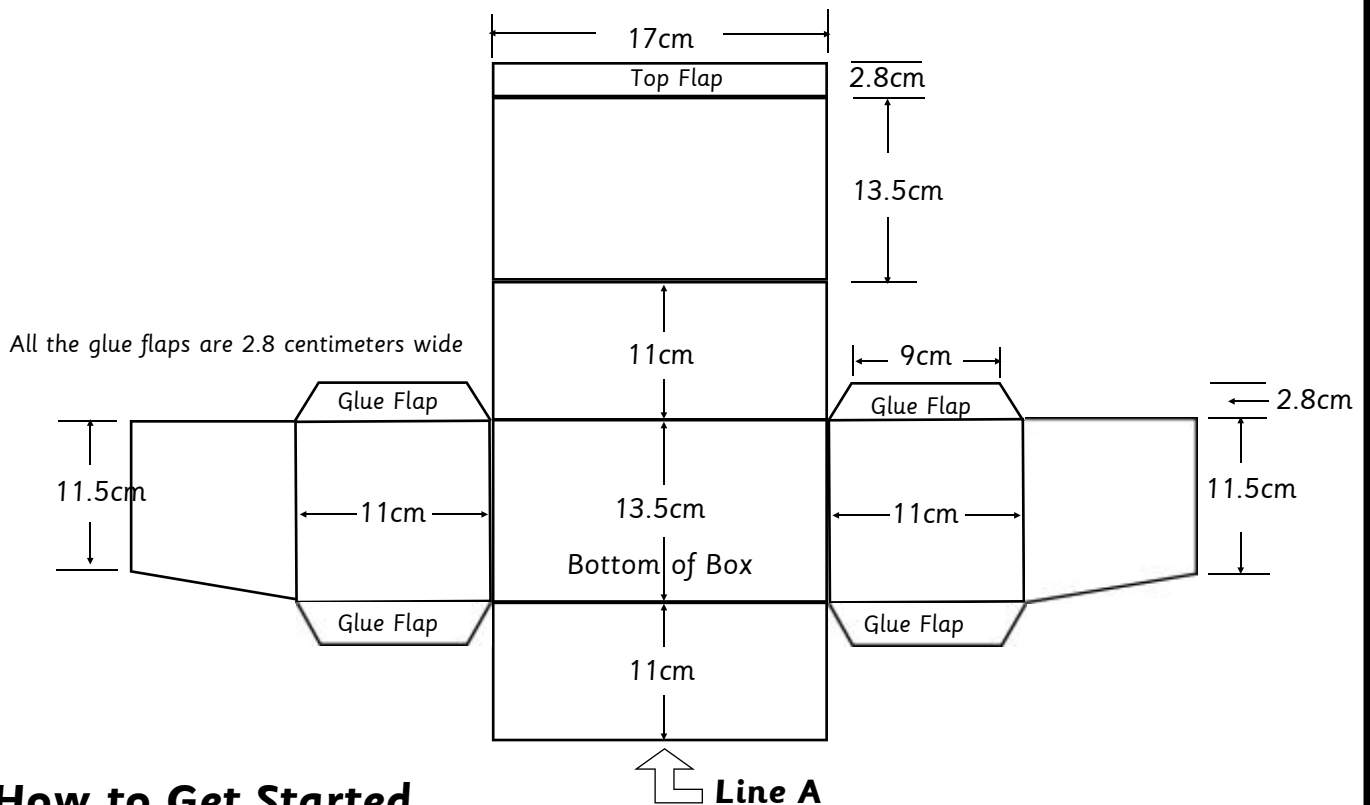


Make your own Gas Mask Box



How to Get Started

Take a large sheet of stiff brown card and draw out the net shown above to the right size. Mark the middle of the bottom edge of the card and place the centre of Line A there. Continue to draw the rest of the net and carefully cut it out. Score along the remaining lines as they are folds. Fold up your box and glue the Glue Flaps, they go inside the long sides of the box. The Top Lip tucks into the box and holds the top shut. Cut out the instructions below and stick them inside the lid.

PACKING OF RESPIRATOR

The Respirator should be placed in box with heavy end (container) standing on the bottom of the box.

The transparent eyepiece should lie evenly on the top of the container and at full length without any deformation.

WHEN RESPIRATOR IS REQUIRED FOR USE.

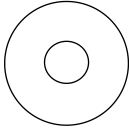
1. Hold Respirator by the straps.
2. Put on by first putting chin into the facepiece and then draw the straps over the head. Adjust straps to obtain close but comfortable fit.
3. Take off by pulling the straps over the head from the back. **DO NOT TAKE RESPIRATOR OFF BY PULLING THE CONTAINER UPWARDS OVER THE FACE.**

B.C.C LTD.

Evacuee Labels

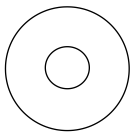
TENTERDEN

SCHOOL PARTY



TENTERDEN

SCHOOL PARTY



These are your childrens' labels. Each child must wear one securely fastened to them by a piece of string. If your photocopier takes card they can be photocopied onto light brown card and cut out. The hole can be punched with a hole punch and if you can find a hole re-inforcer at the stationers that might make them last longer.